

The Muni

2022

ROALD DAHL'S  
**Matilda**

THE MUSICAL



presented by  
**Springfield  
clinic**  
A COMMUNITY OF CARING

[www.themuni.org](http://www.themuni.org)



# har·mon·y

It's better when everything works together. At Concordia Village, excellent service blends with top-notch amenities and quality care to create a lifestyle that hits all the high notes.

**Call 217.290.9538 today to learn more about moving to Concordia Village!**

4101 W. Iles Ave.  
Springfield, IL 62711  
[ConcordiaVillageLiving.org](http://ConcordiaVillageLiving.org)



**Independent Living | Assisted Living | Memory Care - Now Open!**  
**Long Term Care | REACH Short Stay Rehabilitation**





# Here with you.

Molly was suddenly hospitalized and needed surgery when her mom, Astrid, was 1,000 miles away. For Astrid, a simple “thank you” seems inadequate for the compassionate care HSHS St. John’s Hospital’s team showed her and her daughter. “Your kindness made such a difference not only in Molly’s comfort, but in mine as well.”



**HSHS**  
**St. John's**  
**Hospital**

Learn more at [st-johns.org/surgery](https://st-johns.org/surgery)

*The Springfield Municipal Opera and*

*Springfield Clinic*

*proudly present*

**ROALD DAHL'S**  
**MATILDA**  
**THE MUSICAL**

Book By Dennis Kelly

Music & Lyrics by Tim Minchin

Orchestration & Additional Music by Chris Nightingale

**Director**

Laurie Barnes

**Assistant Director**

Betsy O'Brien

**Vocal Director**

Steve Rotello

**Choreographer**

Ronda Brinkman

**Producer**

Mary Matheny

**Orchestra Director**

Bekah Philbrick

**Accompanist**

Dave Barnes

**Stage Manager**

Kevin Kulavic

**Costume Designers**

Dora Rotello & Tina Franklin

**Prop Designer**

Melody Sheehan

**Set Designer**

Michelle Lily

**Make Up Designer**

Clare Hart

**Hair Designer**

Lisa Liles

**Master Builders**

T. David Parker, Ben Pottorf,  
Harvey Edwards, & Kevin Ford

**Lighting Designers**

Laurie Barnes  
& Craig Williams II

**Sound Designer/Operator**

Bill Schnake

Matilda was first commissioned and produced by the Royal Shakespeare Company and premiered at The Courtyard Theatre, Stratford-upon-Avon, England on 9 November 2010. It transferred to the Cambridge Theatre in the West End of London on 25 October 2011 and received its US premiere at the Shubert Theatre, Broadway, USA on 4 March 2013.

Roald Dahl's Matilda The Musical

Is presented through special arrangement with Music Theatre International (MTI).

All authorized performance materials are also supplied by MTI.

[www.mtishows.com](http://www.mtishows.com)

Any video and/or audio recording of this production is strictly prohibited.

**BOX OFFICE**

Muni ticket reservations are handled by MetroTix. Hours: Monday-Sunday 10:00 a.m. – 8 p.m. Tickets are available at all MetroTix locations. To charge by phone, call MetroTix at (314) 534-1111 or online at metrotix.com. On show nights only, tickets can be purchased at the theater site box office which opens 90 minutes prior to curtain time. Curtain time is 8:30 p.m. for all performances.

**TICKET PRICES**

Reserved Seats: \$20.00; General Admission Lawn Seating: Adults \$13.00, Seniors\*/ Students\*/Children/Military\*/First Responders\* \$10.00 with I.D., Children 5 and under are free.

**GROUP RATES**

Special rates are available for groups of 25 or more and 100 or more. Please call the box office at (217) 793-MUNI.

**FAMILY NIGHT**

Wednesday performances of each production are designated as Family Night. Up to 3 children aged 12 and under are admitted free when accompanied by an adult who has a paid, regular priced ticket for General Admission Lawn Seating.

**SENIOR NIGHT**

Every night is Senior Night at the Muni! Seniors, 60 and above with an ID, can purchase General Admission Lawn Seating for the reduced price of \$10.00.

**INTERPRETED PERFORMANCES**

Sign language interpretation for our productions are scheduled as follows:  
*The SpongeBob Musical*: Saturday, May 28th;  
*Ragtime, The Musical*: Saturday, June 18th;  
*Disney Newsies, The Broadway Musical*: Saturday, July 9th; *Matilda, The Musical*: Saturday, July 30th.

**LISTENING DEVICES**

A limited number of sound enhancement devices or a copy of the script on Kindles are available free of charge for our hearing impaired patrons. These may be checked out from the house manager at the entrance and returned after the performance.

**PICNIC FACILITIES**

The Muni Pavilion may be rented for a nominal fee. If interested, contact Randy at 217-836-5881. All other picnic tables are available on a first-come, first-served basis.

**BACKSTAGERS**

Backstagers offer financial contributions, which assist in maintaining the quality of our productions and facility. For more information on joining this special group, see the house manager, or contact us at [www.TheMuni.org](http://www.TheMuni.org).

**HOUSE RULES**

Photography/Recording – the taking of any photographs and/or audio or video recording of a performance is strictly prohibited. Cell Phones/Texting – Please turn off cell phones during performances. Please refrain from texting, as it can disturb others who are trying to enjoy the show. Smoking and E-smoking are only allowed in designated smoking areas outside the gate.

**WEATHER POLICY**

In the event of inclement weather, The Muni reserves the right to hold the start of a performance for a maximum of 1 hour. The Muni may interrupt a show for a maximum of 30 minutes before cancellation. If a show has played for a total of 1 hour, rain checks will not be issued. If a show is cancelled and has not played for a total of 1 hour or to intermission, retain your ticket stub. Your reserved seat ticket stub may be exchanged for a seat at a subsequent performance. However, the same seat location is not guaranteed. Patrons holding General Admission tickets may retain their ticket stub or obtain rain checks before leaving the theater. A performance has not been cancelled until an announcement has been made from the speaker system.  
[www.weather.gov](http://www.weather.gov)

**VOLUNTEERING**

The Muni is a year-round operation run entirely by volunteers. To join us as a volunteer, please see the house manager, or contact us at [www.themuni.org](http://www.themuni.org)



**board of trustees**

Stephan Kaplan, Chairman  
 Tom Appleton, Emeritus  
 John Baker  
 Marjorie Berchtold  
 Dave Britton, Emeritus

Roger Holmes  
 Mary Beth Maloney  
 Dennis O'Brien  
 Randy Ragan  
 Scott Viniard

**board of managers**

Deb Rudis, President  
 Mac Warren, Vice President  
 Craig Williams II,  
 Immediate Past President  
 Randy Ragan, Treasurer  
 Cindy Candioto, Secretary

Jim Dahlquist  
 Jeremy Goeckner  
 Johna Keen  
 Anna Maisenbacher  
 Craig McFarland  
 Amanda Neubauer  
 Jacob Pahde

Nicole Pittman  
 Steven Robinson  
 Steve Rotello  
 Jake Smith  
 Vicki Stehn  
 Meredith Vogel-Thomas  
 Tiffany Williams  
 Carla Wilson

**non-board committee chairs**

Caretaker: Matt Donelan  
 Concessions: Bill Bauser  
 Costumes: Dora Rotello  
 Emergency Preparedness: Diane Hoots  
 Equity, Diversity & Inclusion: Reggie  
 Guyton  
 Front of House Co-Chair: Linda Lucas  
 Grounds: Inez Berg  
 Makeup/Hair: Clare Hart & Stacy Kolaz

Marketing Co-Chair: Anna McFarland  
 Programs: Mary Matheny  
 Props: Melody Sheehan  
 Scenic Art/Paint: Jennifer Gronewold  
 Security: Brian Brewer  
 Senior Bus Chair: Gil Opferman  
 Site Co-Chair: Connor McNamara  
 Volunteer Outreach: Morgan Kaplan



# Merrill Lynch

**Gary Seitz**

Senior Financial Advisor, 217-525-4230

**A**s the sun sets, the curtain rises on warm summer nights at The Muni, a summer tradition for 72 years. Welcome to our 2022 season of "Broadway under the Stars!"

Originally conceived on April 21, 1950, as a not-for-profit theatrical organization, the Springfield Municipal Opera Association transformed a 55-acre wheat field into an outdoor amphitheater.

On opening night, June 17, 1950, thousands of people turned out to see our first production, the operetta *The Merry Widow*.

The Muni, as we became affectionately known, flourished until a series of setbacks in the mid-1950s. A major fire in 1963 destroyed part of the facilities, and another fire destroyed what was left the following year.

With hopes for a rebirth, a test production of *Bye, Bye, Birdie!* was staged in Douglas Park in 1964. The response was so enthusiastic that The Muni was able to rebuild its facility and return to the lake site theater in 1965.

With continued support from our enthusiastic audiences and our dedicated corps of volunteers, The Muni has continued to flourish, becoming one of the largest community theatres in the Midwest. Lavish settings, dazzling costumes and a full orchestra, all are presented under a canopy of twinkling stars. Each summer our audience continues to grow, as we entertain the very best in musical theatre. From families with young children, to teens on dates, or their grandparents, everyone is at home at The Muni.

*We hope you enjoy the show.*

**get on the list!**

Sign up for our mailing list,  
visit [www.themuni.org](http://www.themuni.org)



**W**hen The Muni was founded 72 years ago, it was through imagination, determination and commitment. The overwhelming support of the Springfield community has played a valuable role in The Muni's beginning and in its future. Helping to ensure that future generations will enjoy The Muni are the Backstagers — a group of individuals and businesses whose financial contributions are a vital component to our success and growth.

Their names are proudly listed on these pages. If you would like to contribute to future improvements at The Muni as a Backstager, please see the House Manager, or contact us at [www.TheMuni.org](http://www.TheMuni.org).

We are so lucky to have all of our Backstagers as part of the Muni Magic!

*Listing reflects Backstagers contributions received prior to July 12, 2022.*

### **Benefactor Roundtable (\$1,500 +)**

Gary & Amanda Neubauer

.....

### **Producer's Circle (\$1,000 +)**

Randy & Donna Ragan

Whitney & Steven Rosen

Debbie & George Rudis

Ada Lynn Shrewsbury

.....

### **Director (\$500 +)**

Tom & Helen Appleton

James & Virginia Baker

Marjorie Berchtold

Bonnie Bloome

Susan Cull

Dellert's

George Dirksen

Randy & Kathy Germeraad

Dave & Ruth Hicks

Scott A. & Christine Kuntz

Dave & Sue Lazarides

Grace & PJ Nanavati

John O'Connor

Gil & Ann Opferman

Steve & Dora Rotello

Cathy Schwartz & John

Shafer Family

.....

### **Conductor (\$350 +)**

Scottie & Diane Beville

Kitty Feidt & Tom Ala

Patrick Foster & Donna Lerch

Kay Frevert & Tom

(In Memorial)

Robb & Audrie Haag

Steve & Janet Madden

Bill & Penny McCarty

and Family

Dennis O'Brien

T. David & Kim Carter Parker

Franklin C. Weinkauff



**Lead Actor (\$250+)**

Darlene & Harold Bruntjen  
Bunn  
Don, Melanie & Mark  
Caspary  
Joe & Katie Conlon  
Wanda Dunkel  
Phyllis Eubanks

Dr. Kevin & Kendra Floyd  
Julie Hoffman  
Dorothy & Robert Kane  
Kevin & Casey Kulavic  
Mary Beth Maloney  
Lynn & Joe McMenamin  
Linda & Doug Meyer

Gail Noll & John Milhiser  
Maria & Gary Robinson  
Tim & Melody Sheehan  
Mike, Vicki, Elizabeth &  
Sarah Stehn  
Andrea Stonecipher, M.D.  
Sharon Zook

**Supporting Performer (\$100+)**

Don & Erin Biggerstaff  
Barb Butler  
Wayne & Mary Ellen  
Carlson  
Mary Beth Cohen  
David & Gina Coonrod  
Edward & Caroline  
Cunningham  
Mike & Lori Downing  
Laura Ann Drennan  
Carolyn & Dan Dungan

The Haven Family  
Bob & Sarah High  
Scott, Johna, Polly &  
John Keen  
John & Sharon Kwedar  
Franklin & Mary Lewis  
Mary Matheny  
Ann Meckes  
Vaughn Morrison &  
Sherry Knight

Jennifer & Megan Nelson  
Marla Pringle  
Jennifer Ramm  
Sharon Reynolds  
Betty Robertson  
Jake & Mary Kate Smith  
Bill & Jane Snyder  
Don & Wanda Tracy  
Kevin & Beth Waldman

**Featured Performer (\$50+)**

Mary Megan Cady  
Nancy Cole  
Lisa Fendrich  
IATSE Stage Hands  
Local 138  
Lori Iocca

Anna Kane  
Emalee Knop  
Jacob Pahde  
Harvey Rieck &  
Linda Yount  
Dale & Kathy Smith

Rick & Amy Stewart  
Jim & Jenny Vieweg  
Neil & M. Frances Welters  
Penny Wollan-Kriel

**COPPER COIN**  
BALLET COMPANY

# ROCKBALLET™

LIVE AT THE MUNI with DOWNSTATE  
**AUGUST 20**  
COPPERCOINBALLET.ORG




**B**ased on the beloved novel by Roald Dahl, this Tony Award-winning musical is a captivating treat that revels in the anarchy of childhood, the power of imagination, and the inspiring story of a girl who dreams of a better life (there's also a gloriously vile villain, Miss Trunchbull). Packed with high-energy dance numbers, catchy songs, and featuring an unforgettable little girl with astonishing wit, intelligence, and psychokinetic power, *Matilda* is a joyous girl power romp.

## AUTHORS

**Roald Dahl** (1916-1990) was the author of *Charlie and the Chocolate Factory*, *Matilda*, *The BFG* and many more of the world's best-loved children's stories. He remains one of the world's greatest storytellers and is celebrated annually by the world's biggest author-based event, Roald Dahl Day – which is recognized across the globe on 13th September.

Today, his stories are available in 59 languages and, by a conservative estimate, he has sold more than 250 million books. Many of these stories have also been adapted for stage and screen, including the 1971 film classic *Willy Wonka and the Chocolate Factory*, Wes Anderson's acclaimed *Fantastic Mr. Fox*, and the Royal Shakespeare Company's multi-award winning production of *Matilda The Musical*.

[www.roalddahl.com](http://www.roalddahl.com) | [www.facebook.com/roalddahl](https://www.facebook.com/roalddahl)  
[www.twitter.com/roald\\_dahl](https://www.twitter.com/roald_dahl) | [www.instagram.com/roald\\_dahl](https://www.instagram.com/roald_dahl)

**Dennis Kelly's** work for theatre includes *Debris*, *Osama the Hero*, *After the End*, *Love and Money*, *Taking Care of Baby*, *DNA*, *Orphans*, *The Gods Weep*, and *The Ritual Slaughter of Gorge Mastromas*. He has written the book for the new musical of *Pinocchio* which opened at the National Theatre at the end of 2017, and in 2018 his new play *Girls and Boys* opened at the Royal Court. His plays have been performed worldwide and to date have been translated into nearly forty languages. For television he co-wrote and co-created *Pulling* and wrote and created *Utopia*. For film, he wrote the screenplay for *Black Sea*, directed by Kevin MacDonal. He also wrote the book for the Olivier and Tony winning *Matilda the Musical*. In 2010, *DNA* became a set text on the GCSE English Literature syllabus.

**Tim Minchin** is an Australian musician, comedian, composer, actor, writer and director. He has toured extensively in the US, UK and Australia, performing solo, with bands, and with symphony orchestras. He is the composer lyricist of two hit West End / Broadway musicals, *Matilda* and *Groundhog Day*, both of which won the Olivier Award for Best West End Musical and garnered nominations for Best Score and Best Musical in Broadway's Tony Awards. Stage highlights include *Judas* in the UK / Australian Arena tour of *Jesus Christ Superstar* in 2012, and *Rosencrantz* in the Sydney Theatre Company's *Rosencrantz and Guildenstern are Dead* the following year. He is a member of the Order of Australia, a philanthropist and a mediocre juggler.

I felt drawn to *Matilda* from the first time I saw it. I think everyone has at some time or another had the feeling of being alone in an unfathomable universe. We all want to find a connection with people who listen and care about what we are feeling and thinking. *Matilda* finds a strength of character in spite of her loneliness and she manages to share her courage and integrity with Miss Honey and the kids at school. She inspires the people around her to be their best selves.

I have been very lucky to have a great staff and cast to work with on this show. They are intelligent, intuitive and talented from the youngest to the most experienced. I hope you enjoy the show as much as we have!

-Laurie Barnes

## Do you have a loved one in a **NURSING HOME?**

**Worried about losing  
their life savings?**

*You can still protect much, and maybe all,  
of their assets for the family.*

**Call for Free Consultation 217-726-0176**

Protecting Families from the DEVASTATING  
Cost of Nursing Homes for 30 Years!

[www.Lighthouse-Financial.com](http://www.Lighthouse-Financial.com)





L A Z B O Y<sup>®</sup>

HOME FURNISHINGS & DÉCOR

*Live life comfortably.<sup>®</sup>*

SPRINGFIELD, IL



**WE'RE THE TOP-RANKED,  
HIGHEST-RATED, & MOST  
LIKED FURNITURE STORE  
IN CENTRAL ILLINOIS!**

**WE SUPPORT THE ARTS IN SPRINGFIELD!**





# Tuthmvr

ORTHODONTICS

**Jason J. Aleman D.M.D., M.S.**

**(217) 546-9600**

997 Clock Tower Dr., Ste. B  
Springfield IL, 62704

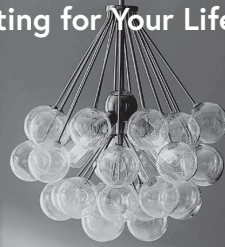


[www.tuthmvr.com](http://www.tuthmvr.com)



*Creating Miles of Beautiful Smiles*

Lighting for Your Lifestyle



Make an appointment with  
our Lighting Experts



[www.springfieldelectriclighting.com](http://www.springfieldelectriclighting.com)



## SUMMER IS MUNI & THE YMCA

Give your kids (and yourself) life changing  
summer experiences with Y Camps, Fitness,  
Teams, Training, Activities, and Social Events  
that help you achieve your full potential

SEE YOUR SUMMER @springfieldymca.org



FOR YOUTH DEVELOPMENT®  
FOR HEALTHY LIVING  
FOR SOCIAL RESPONSIBILITY



# ASHLEY COKER

team



**Ashley Coker, (Partner) MBA**

REALTOR®/Broker

[acoker@thegroup.com](mailto:acoker@thegroup.com) | [ashleycoker.com](http://ashleycoker.com)

Mobile: 217.622.7235 | Office: 217.787.7000 | Fax: 217.787.7779

[facebook.com/AshleyCokerRealtor](https://facebook.com/AshleyCokerRealtor)



Director .....	Laurie Barnes
Assistant Director .....	Betsy O'Brien
Vocal Director .....	Steve Rotello
Choreographer .....	Ronda Brinkman
Producer .....	Mary Matheny
Orchestra Director .....	Bekah Philbrick
Accompanist .....	Dave Barnes
Stage Manager .....	Kevin Kulavic
Assistant Stage Manager .....	DJ Rudd
Costume Designers .....	Dora Rotello & Tina Franklin
Costume Crew .....	Suellen Morgan, Daphne Southern, & Grace Fahey
Set Designer .....	Michelle Lily
Make-up Designer .....	Clare Hart
Hair Designer .....	Lisa Liles
Prop Designer .....	Melody Sheehan
Prop Assistant .....	Eva Hillman
Master Builders .....	T. David Parker, Ben Pottorf, Harvey Edwards, & Kevin Ford
Builders .....	Camille Alger, Mr. Barutcu, Kendra Parker, Liz Armbrrecht Parker, Jim Cannamela, Jen Gronewold, Dick Livingston, Brian Mitchell, Julia Stapleton, Rhonda Trader, Liz West, Duncan Parker, Neil Parker, Matt Donelan, Jeremy Tackett
Master Painters .....	Laurie Barnes, Cast & Staff
Lighting Designers .....	Laurie Barnes & Craig Williams II
Sound Designer/Operator .....	Bill Schnake



**LRS**<sup>®</sup>

LEVI, RAY & SHOUP, INC.

**Many divisions. One vision.**  
LRS.com

**THERE'S NO  
BETTER FEELING  
THAN SECURITY.**



**CELEBRATING 25 YEARS OF EXCELLENCE**

2451 W Monroe Street • Springfield, IL 62704 • 217.787.4970  
CentralIllinoisSecurity.com

Matilda .....	Cam Lecocq
Mrs. Wormwood .....	Carly Shank
Mr. Wormwood .....	Scott Lecocq
Michael Wormwood.....	Ben Bassett
Mrs. Phelps .....	Sandra Fritz
Miss Honey .....	Annie Fulgenzi
The Escapologist .....	Lance Perko
The Acrobat.....	Sierra Dove
Miss Trunchbull.....	Tiffany Williams
Rudolpho .....	Andrew Maynerich
Sergei.....	Matt Ratz
The Doctor.....	Joshua Ratz
Lavender.....	Magdalena Osterhuber
Amanda .....	Charlotte Stewart
Alice.....	Sarah Beck
Hortensia.....	Sofia Flick
Eric .....	Charlie Holzmacher
Bruce .....	Luke Reddy
Nigel.....	Cohen Clemmer
Tommy .....	Sydney Williams
Children’s Entertainer .....	Connor Dove
Henchmen .....	Connor Dove, Peyton Myers, Ben Selsor
Big Kids/Parents.....	Carolyn Assalley, Emma Bachman, Shelby Bayless, Rylee Brinkman, Kelly Carter, Cedric Millhouse, Sophie Nuding, Lydia Ressler, June Southwell, Izzy Stewart
Little Kids.....	Keagan Eck, Reagan Gentry, Phoebe Hacke, Simran John, Grace Klenke, Layne Kretzinger, Charlotte Ratz, Rosie Ratz, Dallas Surratt

## ACT ONE

<i>Miracle</i> .....	Company
<i>Naughty</i> .....	Matilda
<i>Acrobat Story I</i> .....	Kids
<i>School Song</i> .....	Acrobat, The Escapologist
<i>Pathetic</i> .....	Miss Honey
<i>The Hammer</i> .....	Miss Trunchbull, Miss Honey, Kids
<i>Naughty Reprise (Superglue)</i> .....	Matilda
<i>The Chokey Chant</i> .....	Kids
<i>Loud</i> .....	Mrs. Wormwood, Rudolpho, Ensemble
<i>This Little Girl</i> .....	Miss Honey
<i>Bruce</i> .....	Kids

## ACT TWO

<i>All I Know</i> .....	Mr. Wormwood
<i>When I Grow Up</i> .....	Matilda, Miss Honey, Kids
<i>I'm So Clever</i> .....	Mr. Wormwood
<i>Acrobat Story IV (I'm Here)</i> .....	Matilda, The Escapologist
<i>The Smell of Rebellion</i> .....	Miss Trunchbull, Miss Honey, Matilda, Kids
<i>Quiet</i> .....	Matilda
<i>My House</i> .....	Miss Honey, The Escapologist
<i>Revolting Children</i> .....	Kids
<i>Priyatna Paznakomitsa</i> .....	Sergei
<i>Bows</i> .....	Company

**for SpongeBob**

- Christian Wilkey and Scott Lecocq for subbing on guitar in the orchestra

**for Ragtime**

- Mira Ivy and Tanner Stephens for assisting with Props
- Master Builders: Kevin Ford, Ben Pottorf, and T. David Parker
- Bill Bauser and RHS
- Northside Towing Unlimited for donating their services to return the Model T Ford
- Jeremy Goeckner for “becoming” Father beautifully and at warp speed.
- Tiffany Williams for her fabulous support and talent as Sarah during the opening weekend.
- Roger Finnell and Shelby Bayless for stepping up to be swings when other members of the ensemble were unavailable.
- Peyton Ishmael for jumping from Pit Choir to the roles of Stanford White, Newsboy, and New Rochelle Ensemble.
- Samantha “Sam” Gaines for singing the part of Sarah’s friend.
- Jim Leach for rounding out the sound of our pit choir and perfectly timing the baseball bat sound effect. What a game!
- Leon Linder and Kelly Franklin for Ragtime stage photos.
- Matt Franklin for his creative backstage photography studio and gift of touching photos for cast members.
- Keshia and Ryan Robinson for getting Little Coalhouse out to show nights and rehearsals way past his bedtime.
- Dylan Leach, Dulcie Polhemus, Jess Polhemus, Lindsey Rudd, Maggie Mathenia, Ellie Sullivan, and Tonia Sullivan for joining our stage crew.
- DJ Rudd for building Evelyn Nesbit’s swing; Megan Thing, Livia Nieves, Amelia Curtis, and Adam Frank for beautifying it. Whee!

- Jane Brownback, Grace Fahey, Matt Franklin, Tina Franklin, Karen Gerdes, Amber Burke Johnson, Avi McDaniel, Terry Morgan, Dora Rotello, Angelica Salazar, Cindy Wall, and Kari Wolf for help with costumes.
- Kathy Seketa and Karol Young for patiently setting up cast members with microphones each night.
- Anthony Santarelli for help with makeup.
- Anja McClain for help with hair and wigs.
- Ronda Brinkman and ShowBiz Shirts for the gorgeous Ragtime t-shirts.
- All the Ragtime cast and crew members who went the extra mile to help others before, during, and/or after the run.

**for Newsies**

- Ragtime cast, crew & staff
- The Muni Builders and Brian Mitchell for set building
- Marley Roate, Claire Hart and DeWayne Williams for hair & makeup assistance
- Luke Becker for light design
- Kurtbob Williams for projection assistance
- Craig Williams for tech week troubleshooting & painting
- Monty’s Subs for Welcome to Site dinner
- Marie Kulavic & Mindy Kolaz for costume assistance
- Bill Schnake and Duane Fant for sound operation
- For Crewsies Assistance: Caleb Grover, Carrie Pennell, Mia Pennell, Ryan Hortzman, DJ Rudd, Stella Smith
- For painting assistance: Newsies cast members, Caleb Grover, Craig Williams for back wall, Steve Varble for the World door and scenic panels.

**for Matilda**

- Tom Brinkman for making props
- Larisa & Ksenia Durbin for assistance with Russian dialect



Plan Now For a More  
*Harmonious*  
Financial Life

ANNA SOHM, MBA  
FINANCIAL ADVISOR  
217 416 ANNA



SERVICES OFFERED THROUGH KENTRA INVESTMENT SERVICES, LLC (KENTRA, IS), MEMBER FINRA/SIPC. INVESTMENT ADVISORY SERVICES OFFERED THROUGH KENTRA ADVISORY SERVICES, LLC (KENTRA AS), AN AFFILIATE OF KENTRA. COONROD FINANCIAL GROUP IS NOT AFFILIATED WITH KENTRA. R OR KENTRA AS. INVESTOR DUE DILIGENCE: WWW.AMBROFINA.NEAL.COM/COONRODGROUP

EXPERIENCE  
COLLEGE  
SUCCESS



Lincoln Land  
Community College

[www.llcc.edu/success](http://www.llcc.edu/success)

AMBASSADOR™  
**WRN**  
WEATHER-READY NATION  
[www.weather.gov](http://www.weather.gov)

The Muni takes the safety of our patrons, cast, and crew very seriously. When severe weather threatens, we maintain contact with the National Weather Service as members of their Weather-Ready Ambassador program. If inclement weather forces an interruption in tonight's show, please listen to the announcement via our public address system, ushers and staff for further instruction.



Conductor .....	Bekah Philbrick
Keyboard 1 .....	Dave Barnes
Keyboard 2 .....	Jacob Smetters
Reed 1 .....	Carol Martin
Reed 2 .....	Erin Brown
Trumpet 1 .....	Aaron Duncan
Trumpet 2 .....	Austin Wilson
Trombone .....	James Nelson
Cello .....	Sharon Lombard
Guitar .....	Blake Martin
Bass .....	Nate Essex
Percussion .....	Hayden Marshall

\* indicates first Muni appearance

**Carolyn Assalley** (Big Kid/Parent) is thrilled to be back on The Muni stage! She has been blessed to be in several Muni productions. Most memorable roles include *Storyteller/Children of Eden*, *Mother/Peter Pan*, and Ensemble with her daughter Sydney in *Sweeney Todd*. Special thanks to Laurie and her team for allowing her into the multi-talented cast and hubby Bill, for always supporting her!

\***Ben Bassett** (Michael Wormwood) would like to first thank his family for their love and support this summer. He performed 3 years with the FMS Show Choir. He has danced for 2 years at Springfield Dance and prior to that at Dance Arts. He has also performed with STC. He is excited to be making his Muni debut.

**Shelby Bayless** (Big Kid/Parent) is the K-12 Music Teacher at Northwestern. She has appeared at the Muni as a Featured Dancer in *Ragtime*, Frenchy in *Grease*, and *Spamalot*. She loves taking every opportunity she can to make music.

**Sarah Beck** (Alice) is so excited to be participating in another Muni show. She has been in many plays and musicals including playing Annie in *Annie* at AHS and Pinkalicious in *Pinkalicious* with STC (cancelled due to Covid.) She would like to thank her partner in crime, Sofia Flick.

**Rylee Brinkman** (Big Kid/Parent) is a homeschooled sophomore, and this will be her sixth time performing on the Muni stage. She dances at Springfield Dance and is thrilled to be involved in the first season of the Copper Coin Ballet Company. She would like to thank her family and friends for inspiring her and always being there to show love and support.

**Kelly Carter** (Pit Chorus) is happy to be singing in another Muni show under Laurie and Steve's direction. She has been awed by the Big and Little Kids' grasp of the difficult musical score since the first rehearsal and is excited to hear the audience response.

\***Cohen Clemmer** (Nigel) will be a 7th grader at Williamsville Junior High where he is involved in Chorus, Band, Boppin Bee Bees, football and baseball. Cohen recently played the part of one of the Wickersham Brothers in the Williamsville High school production of *Seussical*. He would like to thank his family for their love and support, the music teachers at Williamsville, for their time and knowledge, and Bekah Philbrick for getting him started in the Church Christmas Programs at Douglas United Methodist Church.



Springfield Theatre Centre

at The Hoogland Center for the Arts

Proudly presenting our 75th season!

# THE PLAY THAT GOES WRONG

October 14-16 & 21-23, 2022  
Directed by Kim Shafer

# HEATHERS

The Musical

February 17-19 & 24-26, 2023  
Directed by Preston Dodd

# FUN HOME

November 11-13 & 18-20, 2022  
Directed by Joe-Michael Jackson & Ginny Racette

# THE CHRISTIANS

A PLAY BY  
LUCAS HANATH

March 24-26 & March 31-April 2, 2023  
Directed by Phil Funkenbusch

*Meredith Willson's*

# MIRACLE ON 34<sup>TH</sup> STREET

The Musical

December 2-4 & 9-11, 2022  
Directed by Andrew Rains

# DISNEY NEWSIES JR.

April 14-16 & 21-23, 2023  
Directed by Elizabeth Cheney

# FOLLIES

IN CONCERT

January 20-22, 2023  
Directed by Doug Hahn

# THE COLOR PURPLE

THE MUSICAL

May 12-14 & 19-21, 2023  
Directed by Reggie Guyton & Nicole Pittman

Follow along with us!  
[springfieldtheatrecentre.com](http://springfieldtheatrecentre.com)



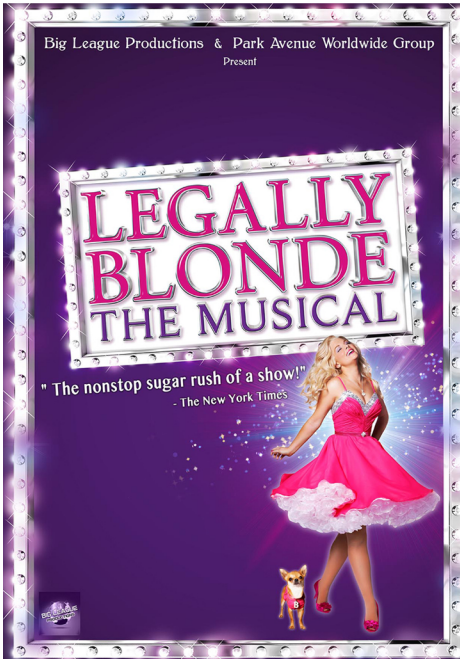
An Amazing Combination! Experience the

# Become a FRIENDS Member

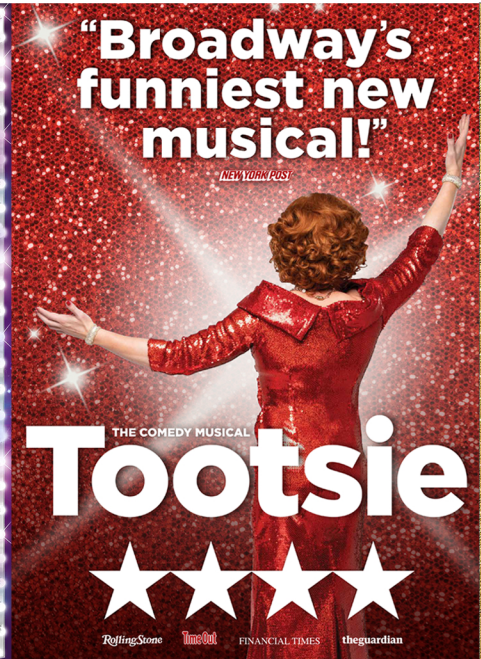


## 2022-2023 UIS

### Three National Tours of Broadway &



**October 30, 2022**



**November 22, 2022**

**SUBSCRIBE TO GET**  
Ticket Prices as LOW as \$14 for Subscribers! Subscribe to SAVE

**Lock in the very best seats NOW at UISpac.com.**

- FRIENDS members can purchase Broadway subscription seats
- August 1: Any remaining subscription seats are available for n

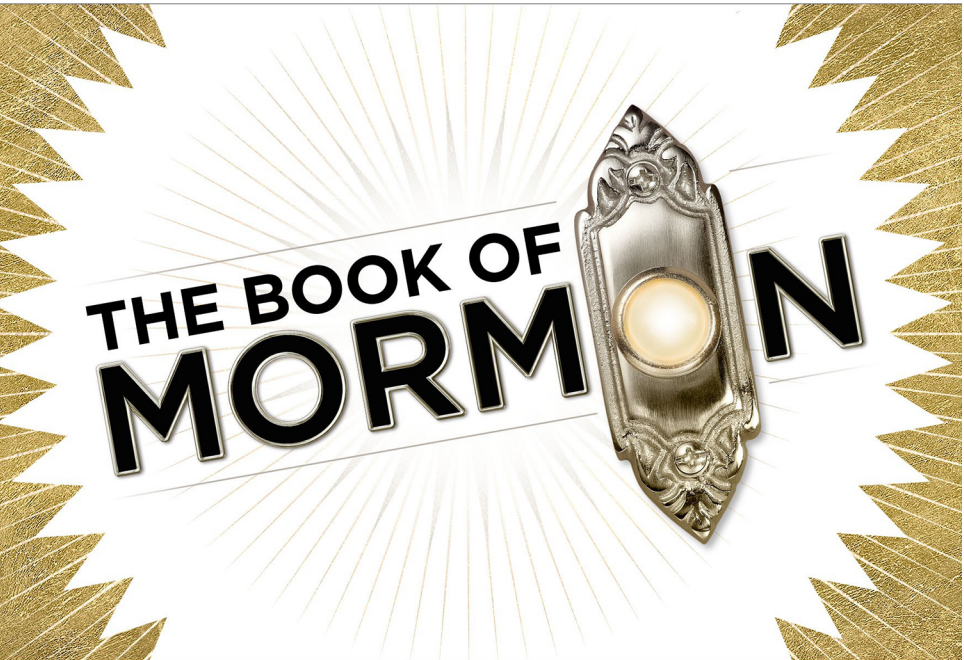
the Broadway Season as a FRIENDS member.

**Join TODAY for Great Benefits!**

## Broadway Series

Friends  
of UIS PERFORMING  
ARTS CENTER

One... **WINNER 9 TONY AWARDS**  
INCLUDING  
**BEST MUSICAL**



**April 18, 2023**

**GET THE BEST SEATS!**

\$60 per couple and enjoy the same GREAT SEATS at every show!

Join NOW.

Non-members to purchase.



**JOIN NOW!**

Scan the QR code or  
visit: [UISpac.com/FRIENDS](http://UISpac.com/FRIENDS)  
Questions?  
Call UIS Ticket Office  
(217) 206-6160





On the stage.

On the road.

Performance is *everything*.

Mercedes-Benz A-Class  
Starting at \$33,950



*Saluting 60+ years of Muni magic!*

Downtown Springfield | [www.isringhausen.com](http://www.isringhausen.com)



**Connor Dove** (Children's Entertainer/Henchman #2) recently graduated from Pleasant Plains High School and plans to pursue a degree in Computer Engineering. This is his third time on the Muni stage. He was cast in *Matilda* and *Addams Family* for the 2020 season before they were canceled and is excited to be back! Connor would like to thank his family, friends, teachers, and everyone else who has supported him in school and theatre.

**Sierra Dove** (The Acrobat) is an honors homeschooled sophomore. This will be Sierra's third time performing on The Muni stage, after performing in *Sponge-Bob* earlier this summer. She is involved in the local arts through Copper Coin Ballet Company and Springfield Dance. She is looking forward to getting back on stage and would like to thank Ronda Brinkman, Liz Donathan, her family, friends, and everyone that has helped her continue her love of music and dance through The Muni this summer!

**Keagan Eck** (Little Kid) will be a freshman at Sacred Heart Griffin this coming school year. He has been involved in many Muni and STC musicals including *Peter Pan*, *Elf*, and many others. He would like to thank his parents for always supporting him through his journey.

**Sofia Flick** (Hortensia) is a junior at Glenwood High School where she participates in multiple choirs. Sofia has been in

many local shows and was most recently seen as Audrey in Hoogland Education's production of *Descendants*. Sofia would like to thank her partner in crime, Sarah Beck.

**Sandra Fritz** (Mrs. Phelps) is happy to help by booking a role she has been playing most of her life. She's a Library Program Manager at the State Library. She recently returned from Spain and Greece furthering her love of travel. Oh and theater for many years including time on the Muni stage.

**Annie Fulgenzi** (Miss Honey) is thrilled to be back on the Muni stage after 3 long years! Annie is a senior at SIUE studying journalism, law, and politics. Most recently, Annie played Dorothy Gale in Muni's *The Wizard of Oz!* Other favorite roles include Fiona in *Shrek the Musical*, Gabriella Montez in *HSM*, and Emily Webb in *Our Town!* Annie would like to thank her parents, as always, for their constant love and support, and Sara Goeckner for always helping her shine.

**Reagan Gentry** (Little Kid) has performed at Hoogland, Muni, Theatre in the Park, and Athens Junior High and High School productions. "Thanks to Ms. Sara for vocal lessons. Thanks to my parents for always supporting my love of theatre. Thanks to the Matilda staff for casting me!"

**\*Phoebe Hacke** (Little Kid) is a 5th grade student at Porta Central. She has been in TIP's *Lion King*. She wants to thank her choir teacher for helping, her mom and teacher, Teagan Thomson, for believing in her, and especially Mrs. Mary Kate Smith and her big sister, Maggie, for all the vocal help.

**Charlie Holzmacher** (Eric) is so excited to be back on the Muni stage this summer! He played Michael Darling in Muni's *Peter Pan*, and recently played Winthrop in The Legacy's *Music Man* and a Chief Ancestor in STC's *Moana Jr*. Charlie will be a freshman at SHS. He would like to thank his little sister Jane for always being his biggest cheerleader!

**\*Simran John** (Little Kid) is excited to be a part of her first Muni show! She played Sebastian in the Hoogland production of *Cinderella*! She loves to read, play volleyball and enjoys all things Disney. She would like to thank her family and friends for being so supportive throughout her theater journey!

**Grace Klenke** (Little Kid) is going into her junior year at high school at Sacred Heart-Griffin where she is also a varsity cheerleader. She has performed with the Muni, STC, HCFTA, TIP and SHG. Earlier this summer, Grace kicked off the Muni season in the ensemble of *The SpongeBob*

*Musical*. Grace would like to thank the staff and her family for all their support.

**\*Layne Kretzinger** (Big Kid/Bully) is an 8th grader whose show credits include *Elf: The Musical* and *Moana Jr*. He's very excited to be in *Matilda* and hopes to be in future Muni shows. Layne thanks Jaime Ernst for casting him in his first role at the age of 10 at Athens Jr. High.

**Cam Lecocq** (Matilda) is very excited to return to the Muni stage. They are entering 8th grade and enjoy singing, playing piano, and being in show choir. Their Past Muni roles include Molly in *Annie* and the Coroner in *The Wizard of Oz*. Cam would like to thank their parents and brother for being so supportive.

**Scott Lecocq** (Mr. Wormwood) is thrilled to be back on the Muni stage nine years after making his theatrical debut as Roger in *RENT*. His return is made even sweeter by sharing the stage with his oldest child Cam as Matilda. Scott has also performed in ADHD's production of *The Rocky Horror Show* (Phantom, Eddie/Dr. Scott, and Riff Raff), STC's *Bat Boy* (Edgar, the Bat Boy), STC's *Rock of Ages* (Stacey Jaxx), and HCFTA's *Pump Boys and Dinettes* (Jim). Look for him later this summer as Carl Perkins in HCFTA's production of *Million Dollar Quartet*. He sends all his love to his wife Kristi, and children Cam and Calvin. Always and forever!

ONLY A FEW SUITES LEFT



VILLAS  
MEMORY CARE

NOW

OPEN



CALL  
NOW

West

100 Stardust Dr.  
Sherman, IL.  
(217) 744-9891

[thevillasmemorycare.com](http://thevillasmemorycare.com)

**Andrew Maynerich** (Rudolpho) is so excited that the Muni is back! Having been involved in local theatre for the last 25 years, Andrew has performed in a number of shows at the Muni, STC, and HCFTA. Favorite on-stage roles at The Muni include The Emcee in *Cabaret*, Jimmy in *Nice Work...*, and Eugene in *Grease*. Andrew has co-directed and choreographed Muni's *Sister Act* and *Thoroughly Modern Millie*, as well as STC's *A Chorus Line* and *42nd Street*. Andrew is also an advanced tap instructor at Springfield Dance Inc. Andrew sends his thanks to Lucas.

**Cedric Milhouse** (Bid Kid/Parent) was recently seen on the Muni stage as a Sardine in *The SpongeBob Musical* earlier this summer! Other favorite roles include: Gerard in *American Idiot* (STC) and *Heathers the Musical* (Mass Media Prod.). During the day, they work as the Title Clerk at Camping World. They'd like to thank their castmates for making this a summer to remember! :-)

**Peyton Myers** (Henchman #3) has been in multiple shows since starting Drama Club in 2015. Such shows include *Aladdin Jr.*, *Grease* (School Version), *Beauty and the Beast Jr.*, *Mary Poppins Jr.* and *Wizard of Oz*.

**Sophie Nuding** (Big Kid) is so excited to turn the tables because she is a teacher in real life! She teaches Earth Science and Theater at Rochester Junior High. This summer, Sophie was in the ensemble of

*SpongeBob* and will be playing Trish this fall in the Legacy's *Kinky Boots*. Other productions include *Mary Poppins* (Muni), *Sister Act*, *Mamma Mia*, and *Hairspray* (Legacy). Sophie also enjoys helping offstage assistant directing shows like *Nightmare at the Sweet Dreams Inn* and several school productions. Sophie would like to give a special shoutout to all of her incredible teachers growing up in Rochester!

**\*Magdalena Osterhuber** (Lavender). Even though this is her first theater performance, she knows that this will be amazing to be in *Matilda*! The first show she saw was *Annie* when she was 2 ½ years old. "I barely blinked!" Magdalena loves theatre, and most of all musicals. Her favorite is *Hamilton*!

**Lance Perko** (The Escapologist) is so excited to return to the Muni stage after eight years. Since then, he has graduated from Southeast Missouri State University. He would like to thank his family, but most specifically his mom for being his rock through the show process. Love you all!

**Charlotte Ratz** (Little Kid) is glad to be back at the Muni after the long wait! She was in Muni's *Peter Pan* in 2019 and has been in SBC's *Nutcracker* twice as a baby mouse, and will be in Copper Coin's *Nutcracker* production soon. Thanks to annoying brother, mom, and dad (Sergei).

**Joshua Ratz** (The Doctor) is an Assistant Attorney General for the State of Illinois. Joshua has performed in numerous local productions, including Muni's *Les Misérables* (Jean Valjean), *Jesus Christ Superstar* (Jesus), and *Miss Saigon* (The Engineer), OTM's *Parade* (Leo Frank) and STC's *Jekyll & Hyde* (Dr. Jekyll & Mr. Hyde). Joshua sends his love to his Miracle, Rosie Ratz, who he shares the stage with tonight, and to Danny, Lily, and his gorgeous wife Julie for sharing their lives with him.

**Matt Ratz** (Sergei) is glad to be back at the Muni after the long wait! He enjoyed watching Muni's *Peter Pan* in 2019 and has been in SBC's *Nutcracker* twice as The Mouse King, and will be enjoying Copper Coin's *Nutcracker* production soon. Thanks to lively sons, Bridget, and daughter (Chuck).

**\*Rosie Ratz** (Little Kid) is a 10 year old home-schooled 5th grader. She has pet toads and goldfish and enjoys all bugs, snakes, turtles, and frogs. She is an expert in all living creatures and loves to go on adventures to study animals in their natural habitat. This is Rosie's first Muni show!

**\*Luke Reddy** (Bruce Boatrotter) is a student at Glenwood Middle School. He's a member of Titan Flare and previously a member of Kentucky Youth Chorale. Past roles include Michael Banks in *Mary Poppins*, Edmund Pevensie in *The Lion,*



*The Witch, and the Wardrobe, and Tom in Schoolhouse Rock.*

**Lydia Ressler** (Big Kid/Parent) is 13 and headed to 8th grade. She is excited and grateful to be a part of her 4th Muni show. She has previously been in *Willy Wonka, Annie, and Wizard of Oz* at the Muni. She has also performed with Springfield Theatre Center in *A Christmas Carol, It's A Wonderful Life* and most recently as Tamatoa in *Moana, Jr.* She is so happy to be back on stage with her peers. She thanks her family and friends for their support and encouragement.

**Ben Selsor** (Henchman #1) had no clue what Matilda was about when he auditioned but is excited nonetheless to be on stage again! This is Ben's fifth Muni show, and he'd like to thank his friends and family for their love and support. It means the world.

Our home equity loans are something to buzz about.



**INB**

inb.com  
Member FDIC  
NMLS# 477621  
LENDER

**SET THE STAGE**

**FOR SUCCESSFUL BUSINESS TECHNOLOGY**

*with*



*Providing IT Solutions  
to Central Illinois Businesses Since 1997*

[www.hansoninfosys.com](http://www.hansoninfosys.com) ★ [info@hansoninfosys.com](mailto:info@hansoninfosys.com)

1-888-245-8468



**Carly Shank** (Mrs. Wormwood) most recently appeared on our stage in *Mary Poppins* and directed *Annie* and *Sweeney Todd*. She works at the UIS Performing Arts Center and swears she did not learn Mrs. Wormwood's bad parenting from her own folks, Ron and Cheryl Armintrout, nor practices it on her son, Avett Shank.

**\*June Southwell** (Big Kid/Parent) has appeared in many productions over the years, and has even dabbled in composing and directing. In their free time, they enjoy reading, drinking coffee, and writing songs. They would like to thank their mother for being so kind and letting them borrow the car, their grandfather, and their best friends.

**\*Charlotte Stewart** (Amanda) will be a 5th grader at Blessed Sacrament School in the fall. She loves to dance, read, and sing. Charlotte is very excited to be in her first Muni show and is so happy to be able to perform with her big sister, who encouraged her to try theater!

**Break a leg!**



**(Then come see us.)**



**ORTHOPEDIC CENTER WALK-IN CLINIC**

**Mon.-Fri. 7:30am to 6pm**  
**Sat. 8am to noon**  
**(217)-547-9100**

1301 S. Koke Mill, Springfield  
[www.OrthoCenterIllinois.com](http://www.OrthoCenterIllinois.com)

**Izzy Stewart** (Big Kid/Parent) will be a freshman at SHG this fall. She has participated in numerous productions with The Muni, STC, TIP and Springfield Dance Theater. She is excited to share the Muni stage for the first time with her younger sister, Charlotte! Izzy thanks the staff of *Matilda* for this opportunity!



[www.TPSmithRE.com](http://www.TPSmithRE.com) • 217-441-8000  
**Todd P Smith, Managing Broker**



**TODD P. SMITH**  
 COMMERCIAL REAL ESTATE



**Koch, Sylvia and Associates**

A private wealth advisory practice of  
Ameriprise Financial Services, Inc.

*Wilson Park  
Funeral Home*

Rochester & Edinburg

498-7161

*"Serving All Faiths"*



**FULLENWIDER-PARK**

**FUNERAL HOME**

Mechanicsburg & Illiopolis

498-7161



**ELLINGER-KUNZ & PARK**

FUNERAL HOME & SPRINGFIELD CREMATORY

544-5755

**GREG & KATHY PARK, Owners**

**MAKE THE  
BOLD MOVE**

TO A LOCAL  
BANK INVESTED  
IN OUR COMMUNITY



**BOS**

Member  
FDIC

bankwithBOS.com

**\*Dallas Surratt** (Little Kid) is excited to make his debut at the Muni. Dallas has played an Isle Evil in *Descendants* and a Rock Troll in *Frozen* with the Hoogland Education Program. Dallas is in the 7th grade at Bluffs Jr. High School. In addition to acting, singing, and dancing, Dallas enjoys gymnastics, track, and hanging out with his friends. Dallas would like to thank his parents for supporting his love for theater.

**Sydney Williams** (Tommy) is a spunky 7th grader at LMS who enjoys sports, dance, and musical theater. She enjoys all things “musical”, including piano lessons and school choir. Sydney made her Muni debut in the 2018 production of *Annie*. Sydney thanks the cast for a fun-filled summer!

**Tiffany Williams** (Agatha Trunchbull) is the Principal at Springfield Ball Charter School. She thanks the Muni and the production staff for the opportunity to boss around More kids ALL summer. Previous roles at the Muni include “Miss Hannigan” in *Annie*, Mama Euralie in *Once on This Island*, and “Aida”. She is so grateful to be part of the magic at Muni this summer.

## CARRIAGE CROSSING

SENIOR LIVING

We provide an age in place campus from Independent Living Cottages, Assisted Living Apartment, and Memory Care Suites!

Call James Slocum at (217) 660-8872 to arrange your personalized tour.  
[www.Carriagecrossingsl.com](http://www.Carriagecrossingsl.com)

**LIVE THE LIFE YOU LOVE**

# The Muni

OUR MAGICAL 2022 SEASON!

EDWARD JONES presents

nickelodeon  
THE  
**SPONGEBOB**  
**MUSICAL**

MAY 27-29, JUNE 1-5 | 8:30 PM  
directed by CRAIG WILLIAMS II

SIKICH LLP presents

**RAGTIME**  
★ THE MUSICAL ★

JUNE 17-19, 22-26 | 8:30 PM  
directed by REGGIE GUYTON

UCB presents

Disney  
**NEWSIES**  
THE BROADWAY MUSICAL

JULY 8-10, 13-17 | 8:30 PM  
directed by MORGAN KAPLAN  
& ANDREW MAYNERICH

SPRINGFIELD CLINIC presents

ROALD DAHL'S  
**Matilda**  
THE MUSICAL

JULY 29-31, AUG 3-7 | 8:30 PM  
directed by LAURIE BARNES



[WWW.THEMUNI.ORG](http://WWW.THEMUNI.ORG)



**REPUBLIC**<sup>®</sup>  
**SERVICES**

*We'll handle it  
from here*

*Best Wishes on a  
Successful Season!*



Lauren Staab, Mark Staab, Paul Staab III,  
Suanne Staab Palazzolo, PJ Staab II, Parker Staab



Honoring Life<sup>™</sup>

StaabFamily.com

217.528.6461

Springfield | Sherman

**Kevin Floyd, D.D.S.**

***We are accepting NEW PATIENTS***

**(217) 546-6775**

1100 Rickard Road  
Springfield, IL



Helping Families Smile

[www.FloydDental.com](http://www.FloydDental.com)



**ELVIS PRESLEY | JERRY LEE LEWIS | CARL PERKINS | JOHNNY CASH**

# MILLION DOLLAR QUARTET



**Aug. 26-28 & Sept. 2-4**

Directed by Steve Kaplan • Music Direction by Damien Kaplan

Sponsored by Edward Jones



**GET YOUR TICKETS TODAY!**  
**523-2787 OR HCFTA.ORG**  
420 S.6TH STREET IN DOWNTOWN SPRINGFIELD

**THE HOOGLAND**  
CENTER FOR THE ARTS



**THE  
CENTRAL ILLINOIS  
ARTS & ENTERTAINMENT**

Resource  
Since 1975

---

**Pick IT up every Thursday  
or online at  
[www.illinoistimes.com](http://www.illinoistimes.com)**



**ROBERT GORDON**  
& ASSOCIATES, INC.

CERTIFIED FINANCIAL PLANNER™  
REGISTERED INVESTMENT ADVISOR

**(217) 698-4844**

**[rga@rga-advisors.com](mailto:rga@rga-advisors.com)**

**[www.rga-advisors.com](http://www.rga-advisors.com)**



**Enjoy a snack or drink from  
The Muni concession stand.**

We have bottle soda products, bottled water, bottled flavored water, fountain soft drinks and ice water.

We carry an assortment of candy bars and bags of chips as well as nachos, pretzels, fresh popcorn, and ice cream treats.

Enjoy a delicious Muni hot dog, Turasky BBQ, hamburgers, pizza, or some delicious homemade chocolate chip cookies.

**Laurie Barnes** (Director/Lighting Designer) has been involved with Muni since 1975 in various capacities. She retired from Glenwood High School just before Covid where she taught Physics and directed the musicals. She is the proud mother of Sean, Kate, Betsy, and Conor, mother-in-law to Tony and Michelle, and grandmother to Malcolm and Calvin, and Russell. She claims Dave Barnes as her baby brother!

**Betsy O'Brien** (Assistant Director) is thrilled to be a part of Muni's return season! After 30+ years onstage and backstage at Muni, this is her first time Assistant Directing, and she thanks her #1 theatrical mentor, mom/Director Laurie Barnes, for her encouragement and guidance. She sends her love and thanks to James, Alex, Mary, and Owen for their incredible support!

**Steve Rotello** (Vocal Director) works for the Executive Ethics Commission for the State of Illinois. He has vocal directed for The Muni's *Jesus Christ Superstar*, *Ragtime* and *Aida*, and STC's *The 25th Annual Putnam County Spelling Bee*, *Dessa Rose* and *Dream-girls*. Steve sends his love out to his wife, Dora.

**Ronda Brinkman** (Choreographer) has been a member of the Springfield arts community most of her life as a dancer, actor, choreographer and volunteer. Teaching for over 30 years, she is the CEO of Springfield Dance, a non-competitive dance and performance academy. As a creator of children's dance programming the past two decades,

she is the Artistic Director of Springfield Dance Theatre, a large children's arts organization dedicated to enriching the community through the performing arts. She creates hour long children's ballets such as *Aladdin*, *Peter Pan*, *Beauty and the Beast* and *Peter Rabbit* in order to introduce young performers and audience members to the art of dance.

**Bekah Philbrick** (Orchestra Director) is the Band Director at Auburn CUSD #10. She has a Bachelor's in Music Education from Millikin University and a Masters in Teacher Leadership from the University of Illinois at Springfield. She is active in community theater, playing Oboe/English Horn in many pit orchestras, as well as being the musical director of several productions at Auburn High School. She also plays in the Springfield Municipal Band. In addition, she serves as the Director of Music Ministries at Douglas Avenue United Methodist Church. Bekah would like to thank her husband Tom and daughters, Leotie and Aria for all their love and support!

**Dave Barnes** (Accompanist) joined the staff of *Matilda* directly after playing our first show of the season, *SpongeBob the Musical*. Dave will also accompany *Kinky Boots* at the Legacy in October. Besides reminding us that excessive cake eating is understandable, *Matilda* rightly instructs us to revolt against oppression for what we know to be right. Yeah, simplistic musical plots can still hit home. Good luck at KU, Trevor!



- Backyard Bird Feeding Supplies
  - Gifts and Garden Decor
  - Premium Dog and Cat Foods
- 217-789-6468  
wbu.com/springfieldil  
Find us on Facebook!



1930 S. MacArthur Blvd. Springfield

# Timi's Tours

Moweaqua, Illinois  
www.TimisTours.com



## Luxury Tours & Charters

Join Timi's Tours on one of our luxury guided Motorcoach Tours, Theatre Trips, Cruises, or International Tours!

Have a group and need Transportation? We do that too! Timi's Tours fleet of modern highway coaches are well equipped for groups up to 52 passengers!

**Call Today! 1-800-682-8214**

## The Muni's Broadway Under the Stars

is proudly supported by

**UCBbank.com** 



**UNITED COMMUNITY BANK**  
*The Leader of Community Banking*



# verlo

M A T T R E S S

## SLEEP COOL SALE

 <b>\$50 OFF</b> v7 collection set - PLUS - <b>FREE</b> DreamCool Mattress Protector	 <b>\$100 OFF</b> v9 collection set - PLUS - <b>FREE</b> DreamCool Sheets	 <b>\$200 OFF</b> v11 collection set - PLUS - <b>FREE</b> DreamCool Pillows & Sheets
---	--	---

**SPRINGFIELD** 3308 Robbins Rd.  
(217) 787-2125 • [verlo.com/springfield-il](http://verlo.com/springfield-il)

**Kevin Kulavic** (Stage Manager) is thrilled to be joining the staff of *Matilda*. He is no stranger to the Muni, having performed and worked on over 25 shows. Kevin would like to thank Laurie for bringing him on board.

**Dora Rotello** (Costume Designer) a former Muni widow, began to costume with the encouragement of Marge Roth. She is Muni Costume Chair. Dora thanks her wonderful costume crew. This is definitely a team effort, we do this together! Special thanks to her husband, Steve, for his support and encouragement, and for once again letting their house become filled with costumes.


**Tina Franklin** (Costume Designer) is excited to be working another Muni show with Laurie and Dora. A longtime costumer, her credits include *Thoroughly Modern Millie*, *Little Shop of Horrors* and *Mary Poppins* (Muni) and *The Little Mermaid*, *Into The Woods* and *School Of Rock* (GHS). Her family's love of theater led her to costuming, and she thanks them for their encouragement and support.

**Clare Hart** (Make-up Designer) has had a lot of theatre experience over the years with Muni, STC, TIP and JTG, and has held

various support and staff positions. She enjoys gardening and singing with her friends. Clare sends her love out to Ed, Megan and Kevin.





**Melody Sheehan** (Prop Designer) aka Diva of Doodads has designed props for many of the theatre venues in the area, including, but not limited to, HCFTA, The Muni, STC, ALPLM, and TIP. She wants to thank her husband, Tim, for all that he does to support and assist her.

**Craig Williams II** (Lighting Designer) loves the arts in Springfield and has served as a member of several nonprofit boards including STC, SAAC, Springfield Urban League, Copper Coin Ballet, and most recently as President of The Muni. In addition, he has directed many community theatre productions, including Springfield High's *Hairspray*, *Beauty and the Beast* and *Ragtime*; *9 to 5* and *Chicago* at STC; *The Wiz*, *The Last Five Years*, and *Songs for a New World* at HCFTA; and *The Little Mermaid*, *Mary Poppins*, and *EVITA* for Muni, to name a few. When not volunteering, Craig works for the State of Illinois SAP team and enjoys traveling with husband, Ryan.



**Proud to Support the  
Springfield Muni Opera!**

**CEFCU** Not a bank. Better.®

Insured by NCUA  [cefcu.com](http://cefcu.com)   





*Lunch & Dinner*  
**★ BUFFET ★**  
 PIZZA • BROASTED CHICKEN • SALAD BAR • DESSERT



**EVERY DAY 11AM-2PM • 5-8PM**

Bring this ad in for  
**{ \$1 OFF BUFFET }**

Valid for  
 one buffet.

1549 S. Dirksen Pkwy  
**522-4886**

Our paints bring Muni's imagination to life.  
 Imagine what we can do for you.

1627 SOUTH MACARTHUR • 787-5474

**ALLIED**  
 An Interstate Agent for Allied Van Lines  
 © 2008 Allied Van Lines, Inc.  
 U.S. DOT No. 076235

**RELIABLE, DEPENDABLE, PREDICTABLE.**

Serving The Area Since 1906  
*"Original Allied Van Lines Agent Located In Springfield"*

- Free estimates • Personalized pre-move planning
- On-time pick-up & delivery • Managing moves across town or across the world
- Expert packing, crating & storage • Office & industrial relocation
- Computerized records management • Over 180,000 sq. ft. of storage space

**HILLIER**  
**STORAGE & MOVING CO.**  
 ILL CC #4285 MC-DR  
[www.hillierstg.com](http://www.hillierstg.com)  
**(217) 525-8550 • 1-800-500-6683**  
 2728 S. 11th, Springfield, IL 62703  
 Thomas R. Swift, President

## In Memoriam

It has been a difficult two years for the Muni Opera. For the first time in fifty-five years our stage was dark as we canceled two seasons due to the Covid virus. The Muni is a volunteer organization that is driven by love for the arts. Countless volunteers have shared their gifts to create a magical place that enriches the city of Springfield and the surrounding area. Sadly, 2020 and 2021 saw the passing of two of our most beloved Muni family, Gene Rubley and Georgia Dirksen.



**Gene Rubley** - Gene left us on August 18, 2020. For many decades, he served the Muni in several capacities ranging from actor, director, manager and Trustee. His service also extended to many other organizations and in 1990, he was the recipient of the Mayors Award for the Arts. Gene was most proud of his appearance in the ABC miniseries, *The Awakening Land*, filmed at New Salem State Park with Hal Holbrook and Elizabeth Montgomery. He was a unique spirit who was affectionately known as "Uncle Gene." His contributions went beyond titles and job descriptions as his kindness and compassion provided strength and support for so many.



**Georgia Dirksen** - On November 15, 2021, we lost a treasure of the Springfield arts community, Georgia Dirksen. Georgia was a wonderful actress who appeared as the leading lady in thirteen Muni productions. Her devotion to the theatre extended to other venues including the Springfield Theatre Guild, and Theatre in the Park. She directed four Muni productions. She was a Muni Trustee and shared her wisdom graciously. She inspired her two daughters, Patty and Libby, to act on our stage while her incredible husband, George, was their rock of support. Muni patrons will remember her as an outstanding actress, while the Muni family will remember her as a beautiful soul who brightened our lives.

As the Muni resumes, that Muni Spirit rekindles, enriched by the lives of Gene and Georgia.

THANKS FOR  
ANOTHER  
*encore*  
SEASON.



  
**Butler**  
FUNERAL HOMES  
AND CREMATION TRIBUTE CENTER

butlerfuneralhomes.com 



**King's Daughters**  
ORGANIZATION  
SERVING SENIORS SINCE 1893

Proud supporter of the Muni Senior  
Bus again in 2022. Celebrating  
over 125 years of service to seniors  
in Sangamon County.

- 1965** The Music Man; South Pacific
- 1966** My Fair Lady; Pajama Game
- 1967** Brigadoon; Guys and Dolls; Camelot
- 1968** The Unsinkable Molly Brown; Oliver!;  
Kiss Me, Kate
- 1969** Bells Are Ringing; Gypsy; Annie Get Your Gun
- 1970** Li'l Abner; A Funny Thing Happened on the Way to  
the Forum; Man of LaMancha
- 1971** Funny Girl; The King and I; Fiddler on the Roof
- 1972** You're a Good Man, Charlie Brown; 1776; Most Happy  
Fella; The Sound of Music
- 1973** Once Upon a Mattress; Carnival; Promises, Promises;  
Oklahoma!
- 1974** On a Clear Day You Can See Forever; Hello, Dolly!;  
Applause; The Music Man
- 1975** Guys and Dolls; How To Succeed in Business Without  
Really Trying; Fiddler on the Roof; Mame
- 1976** 1776; Irene; Bye, Bye, Birdie!; Calamity Jane
- 1977** Cinderella; The Desert Song; West Side Story; My Fair  
Lady
- 1978** Sweet Charity; Brigadoon; Paint Your Wagon;  
I Do! I Do!
- 1979** Shenandoah; No, No, Nanette; Pajama Game;  
Carousel
- 1980** South Pacific; Good News; Gypsy; Show Boat
- 1981** Camelot; Grease; Oklahoma!; A Little Night Music
- 1982** Kismet; George M!; Oliver!; Follies
- 1983** The King and I; Joseph and the Amazing Technicolor  
Dreamcoat; The Student Prince; Hello, Dolly!
- 1984** Peter Pan; Funny Girl; Two Gentlemen of Verona; The  
Music Man
- 1985** Annie; Damn Yankees; You're a Good Man, Charlie  
Brown; Evita
- 1986** The Sound of Music; Jesus Christ Superstar; Cabaret;  
Seven Brides for Seven Brothers
- 1987** Annie Get Your Gun; The Wiz; Promises, Promises;  
Gigi
- 1988** Peter Pan; South Pacific; 42nd Street; Mame
- 1989** Joseph and the Amazing Technicolor Dreamcoat;  
Fiddler on the Roof; Singing in the Rain; My Fair Lady
- 1990** Oklahoma!; Teddy & Alice; Anything Goes; Camelot
- 1991** Oliver!; My One and Only; Into the Woods; Show Boat
- 1992** Man of LaMancha; Dreamgirls; Me and My Girl; The  
Unsinkable Molly Brown
- 1993** Hans Christian Andersen; Sugar; Pirates of Penzance;  
Brigadoon
- 1994** Peter Pan; Hello, Dolly!; Big River; Carousel
- 1995** The King and I; Meet Me in St. Louis; City of Angels;  
Gypsy
- 1996** Phantom; The Will Rogers Follies; Little Me; The  
Wizard of Oz
- 1997** Guys and Dolls; Crazy for You; The Secret Garden; Kiss  
Me, Kate
- 1998** Fiddler on the Roof; Bye, Bye, Birdie!; Godspell; Annie
- 1999** State Fair; 42nd Street; The Goodbye Girl; The Sound  
of Music
- 2000** Cinderella; Grease; Children of Eden; The Music Man
- 2001** How To Succeed in Business Without Really Trying; A  
Little Night Music; West Side Story; Peter Pan
- 2002** Joseph and the Amazing Technicolor Dreamcoat;  
Anything Goes; Mame; South Pacific
- 2003** Titanic; Big; My Fair Lady; The Wizard of Oz
- 2004** Honk!; Seven Brides for Seven Brothers; A Chorus  
Line; Big River
- 2005** The Sound of Music; Ragtime; Annie Get Your Gun;  
Disney's Beauty And The Beast
- 2006** Annie Warbucks; Chicago; Elton John & Tim Rice's  
Aida; The King and I
- 2007** Miss Saigon; Peter Pan; Grease; Oklahoma!
- 2008** Hello, Dolly!; All Shook Up; The Secret Garden; The  
Music Man
- 2009** Oliver!; The Producers; Fiddler on the Roof; Disney  
High School Musical
- 2010** Seussical; Into The Woods; Jesus Christ Superstar;  
Annie
- 2011** Big River; Guys and Dolls; Hairspray; The Wizard of Oz
- 2012** Joseph and the Amazing Technicolor Dreamcoat;  
Crazy for You; Once On This Island; Disney's Beauty  
and the Beast
- 2013** Les Misérables; Dreamgirls; Peter Pan; RENT
- 2014** The Sound of Music; All Shook Up; Shrek the Musical;  
Jekyll & Hyde
- 2015** Spamalot; Seussical; West Side Story; Cabaret
- 2016** South Pacific; Sweeney Todd; Nice Work If You Can  
Get It; Disney's The Little Mermaid
- 2017** Roald Dahl's Willy Wonka; Disney's Mary Poppins;  
White Christmas; Grease
- 2018** Little Shop of Horrors, Sister Act, Legally Blonde,  
Annie
- 2019** Peter Pan, Evita, Thoroughly Modern Millie, The  
Wizard of Oz

*The individuals and businesses appearing on this page and elsewhere in this program help to make "Broadway Under The Stars" possible. We thank them and encourage you to let them know you appreciate their support of The Muni.*

### **Our Corporate Show Sponsors**

UCB, Edward Jones, Sikich LLP and Springfield Clinic for supporting the arts in our community;  
Backstagers for their financial support that allow for the continued improvements at The Muni.

### **Auditions**

The Hoogland Center for the Arts and their dedicated staff for providing a terrific location for auditions and rehearsals;

Thank you to all our audition volunteers! We greatly appreciate your time and talents that helped create this beautiful Muni season.

### **Additional Thanks**

The staff at MetroTix for handling our ticket reservations and Phyllis Eubanks, John Clark, Gary Moore, Judy Carlisle, Donna Ragan, and John Baker for working night after night in the ticket booth giving quick and cheerful service;

Bank of Springfield, Pease's, Lube Masters, and Williamsville State Bank & Trust (all locations) for selling our season tickets;

The City of Springfield and CWLP Lake Services for mowing our parking areas;

Springfield Police Department for traffic control assistance following every performance;

*Illinois Times, State Journal Register*, and our local radio stations for helping to spread Muni Magic;

Springfield Theatre Centre for prop and costume assistance;

Inez Berg who works tirelessly with the Muni landscaping and flowers that provides such an ideal setting for Muni Magic;

The King's Daughters Organization for their generous grant to the Senior Bus program and Gil Opferman for his continued dedication to the program's success;

Huge shout-out to our Marketing Committee: Vanessa Ferguson, Jeremy Goeckner, Dan Humphries, Casey Kulavic, Anna & Craig McFarland, Michelle McLaughlin, Rachel Purdue, Lindsey Rudd, Brett Rutherford, Georgi Samaris, Bill Schnake, Mac Warren;

First Night Staff: Lindsay Rudd, Matt Woodson, Anna Maisenbacher, Mike Spainhour, Robb Stark, Mary Myers, Dave Barnes, Jeremy Goeckner, Craig Williams II, KurtBob Williams, Dennis O'Brien, Amanda Neubauer;

First Night Cast: DeWayne Williams, Tiffany Williams, Brianna Gude, June Chappelle, Jim Leach, LaDonna Wilson, Peyton Knowski, Hannah Levin, Erica Metzger, Devin Leming;

Thank you to Dennis O'Brien for the donation of two Kindle devices!

The Muni would like to thank the following for their involvement in a donation of 30 Japanese Maple trees: Davidsan's Japanese Maples, Randy Belleville of New City Greenhouses, Marissa Jones of Lincoln Memorial Gardens, and Southeast High School National Honor Society.

Wilma Jones for the donation of men's suits in loving memory of her late husband, Dave.

Broadway Costumes, a division of Chicago Costume Co.

STC - Marie Kulavic

Cindy Wall

General thanks: Denise Arjmand, Berny Byerly, Angie Covert, Georgia Dirksen Family, Rose Hohen, Deb Iams, Rose LoGrasso, Barb McKean, Sal Madonia, Jan Requa- costume donation

*And a very special thanks to our many volunteers who work tirelessly in every capacity to ensure that your summer is filled with music, memories and Muni Magic!*

# The Muni

OUR MAGICAL 2022 SEASON!

EDWARD JONES presents

nickelodeon  
THE  
**SPONGEBOB**  
**MUSICAL**

MAY 27-29, JUNE 1-5 | 8:30 PM  
directed by CRAIG WILLIAMS II

SIKICH LLP presents

**RAGTIME**  
★ THE MUSICAL ★

JUNE 17-19, 22-26 | 8:30 PM  
directed by REGGIE GUYTON

UCB presents

Disney  
**NEWSIES**  
THE BROADWAY MUSICAL

JULY 8-10, 13-17 | 8:30 PM  
directed by MORGAN KAPLAN  
& ANDREW MAYNERICH

SPRINGFIELD CLINIC presents

ROALD DAHL'S  
**Matilda**  
THE MUSICAL

JULY 29-31, AUG 3-7 | 8:30 PM  
directed by LAURIE BARNES



WWW.THEMUNI.ORG



Springfield  
**Memorial  
Hospital**

## New Look. Renewed Promise.

In partnership with Memorial Health, Springfield has a new look. But the changes go even deeper. We are simplifying the way you access care, from our streamlined website to our growing network of expertise and technology. Now, wherever you are, Memorial means you have access to the region's top care.

---

Connect with us online at **memorial.health**